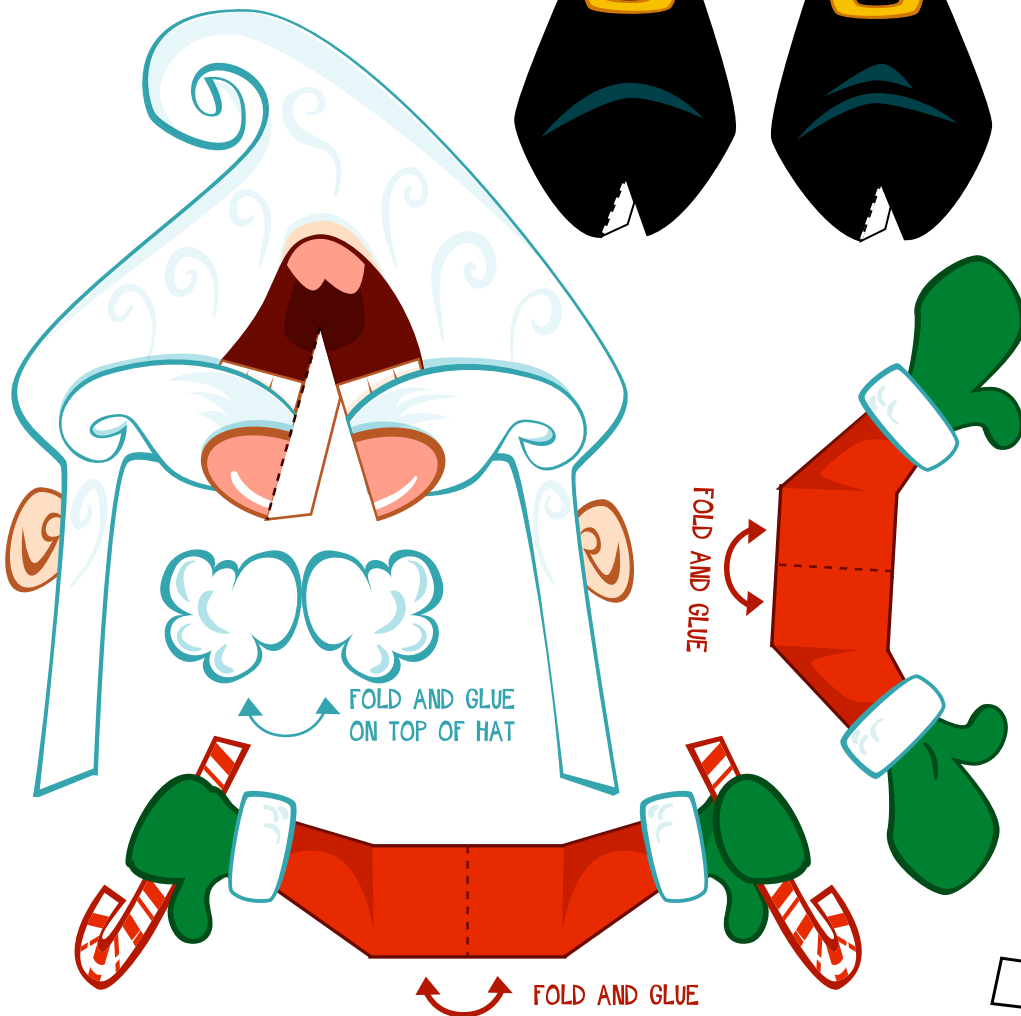
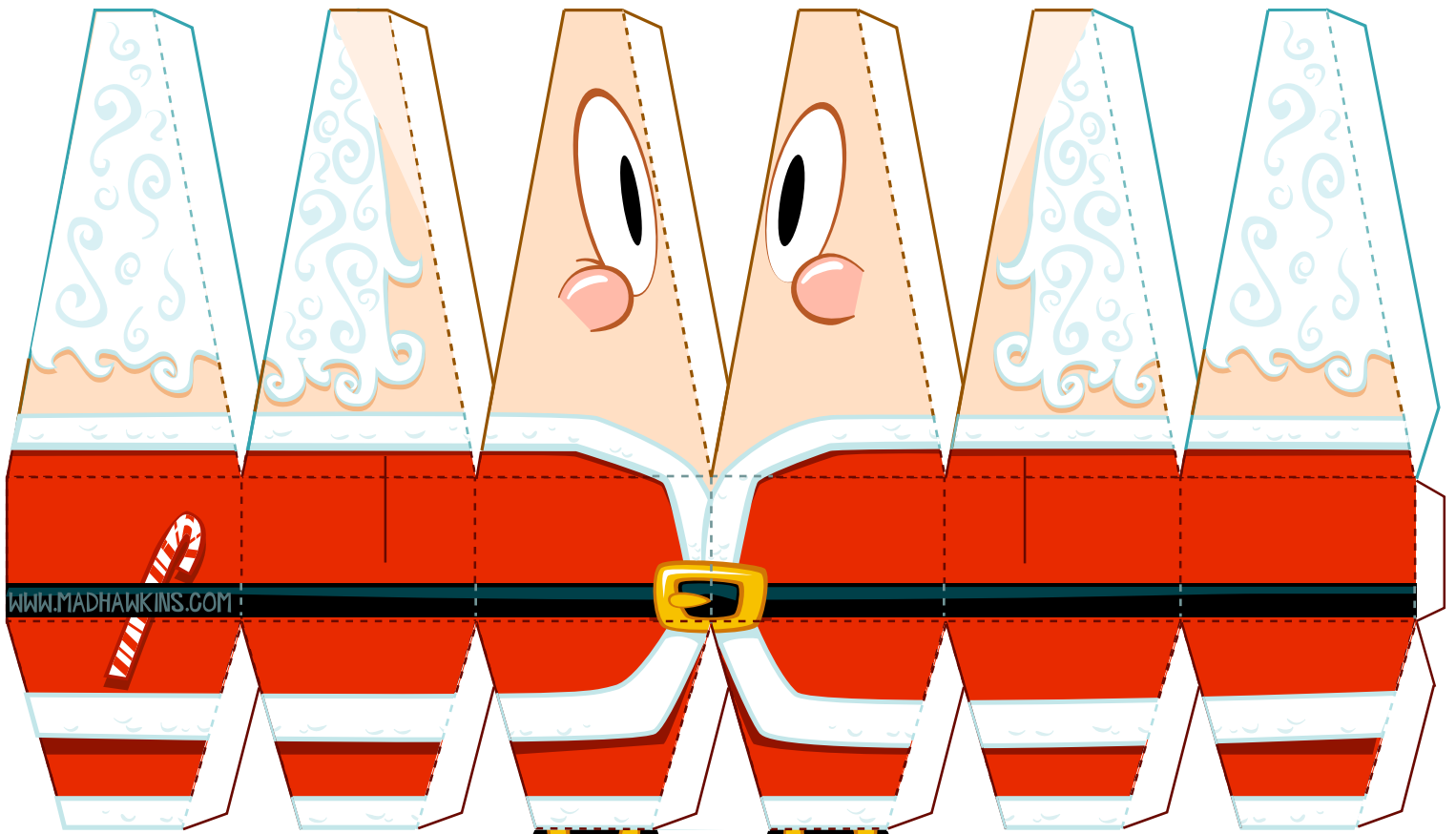


★ DO IT YER SELF PAPER SANTA! ★



1. Score the dotted fold lines with a dead ball point pen or a straightened out paper clip and a straight edge.
 2. Cut on solid lines. Be sure to cut the slots for his arms.
 3. Glue (elmers type) santa's body into an egg shape. Glue santa's nose together.
 4. While Gluing hat into cone shape be sure to fold the white rim up. Glue puff ball on top of hat.
 5. Glue beard light spots on the side of Santa's head. Fold ears forward.
 6. Glue the toes of santa's boots together and fold feet out.
 7. Fold and glue arms together and place in slots.
 8. Have a Merry Christmas!
- For extra jolliness hang a jingle bell on a peice of thread inside santa!

